

Notice de montage

PREPARATIFS : Outils nécessaires :

- Clés à laine : **5mm et 2.5mm**



- Marteau :



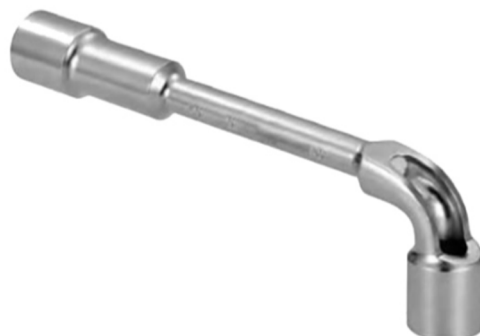
- Perforateur électrique



- Foret à béton : **Ø8**



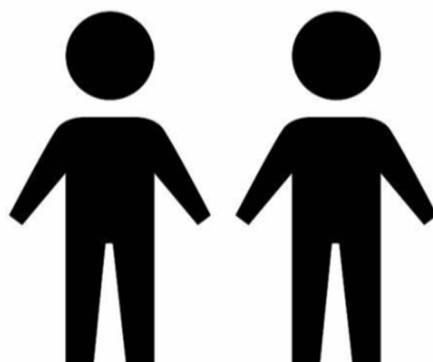
- Clé à pipe : **13mm**



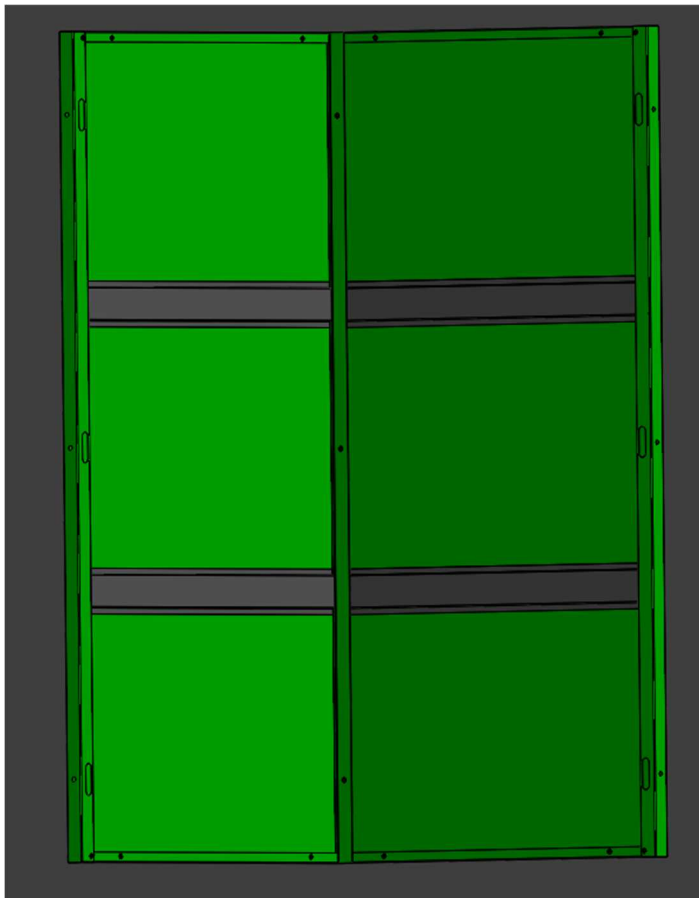
- Clé plate : **13mm**



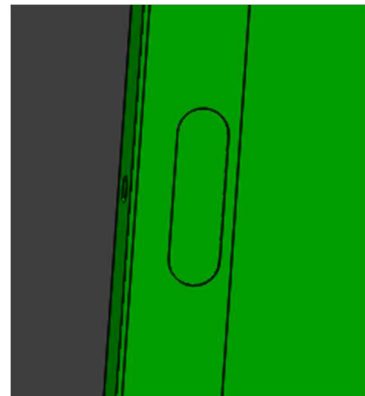
Nombre de personnes :



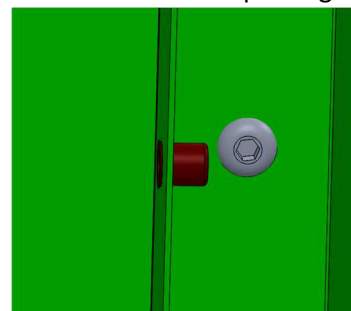
ETAPE 1 : Assemblage des « panneaux » en « angle » : 2 unités



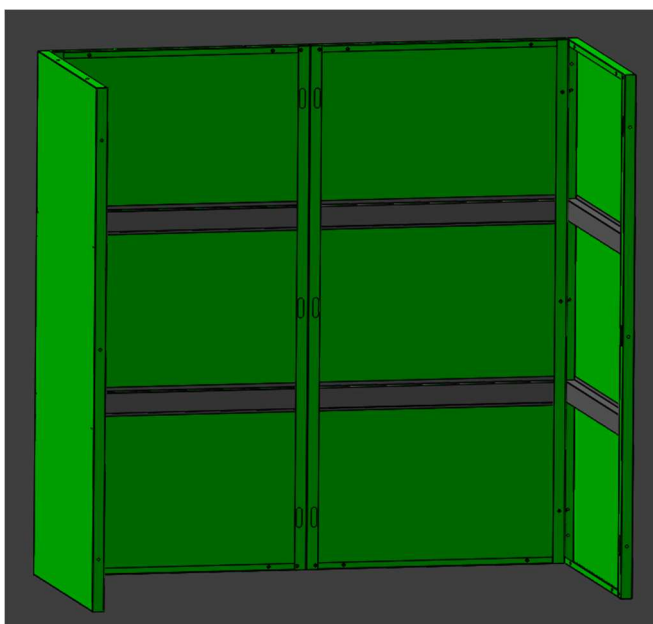
!/ : les ouvertures doivent être
aux extrémités de l'angle



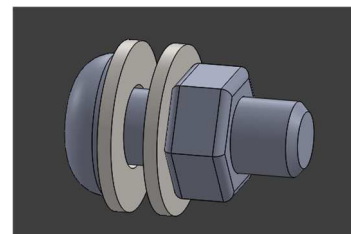
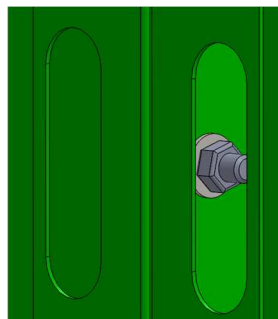
3 vis BHC M8x20 par angle



ETAPE 2 : Assemblage des 2 « angles »



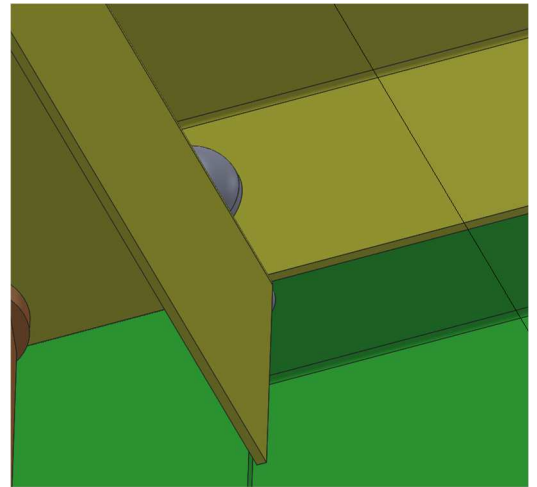
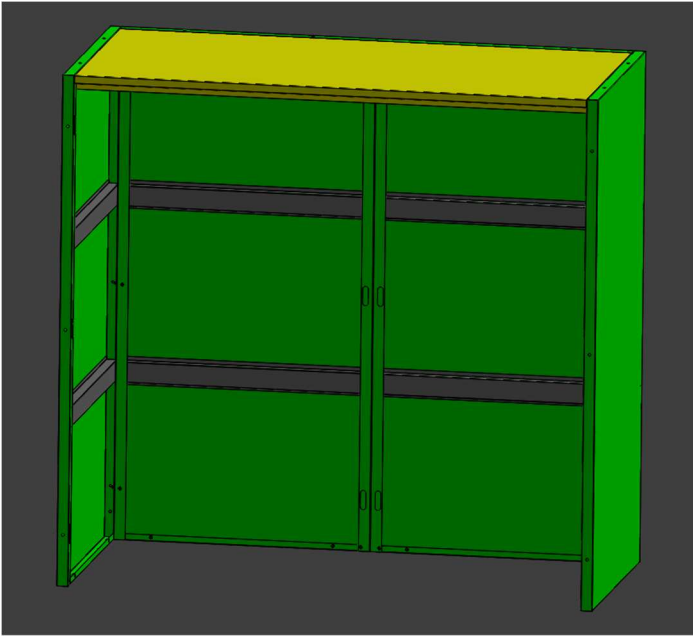
- 3 boulons :
- Vis BHC M8x20
 - Rondelles M8
 - Ecrou M8



ETAPE 3 : Assemblage « toit »

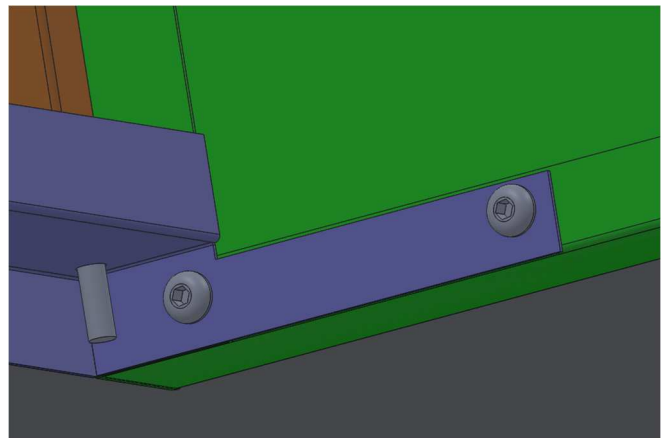
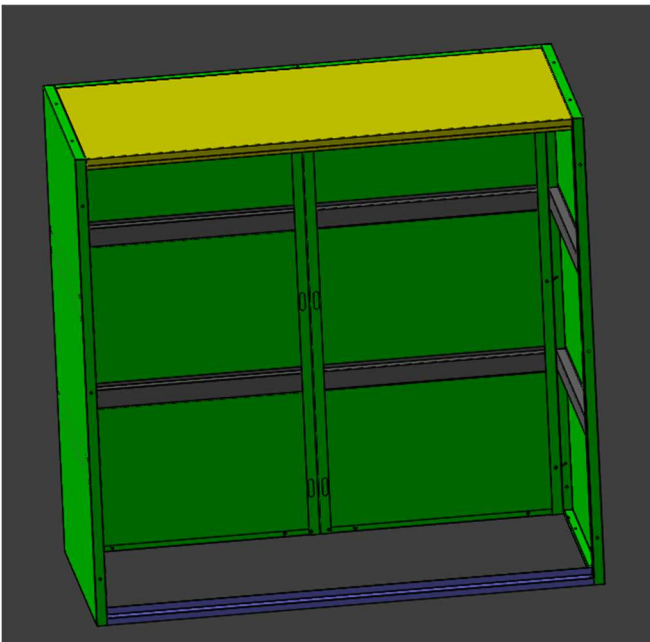
10 vis BHC M8x20

!/ \ : ne pas oublier les deux vis extérieures dans la zone pliée

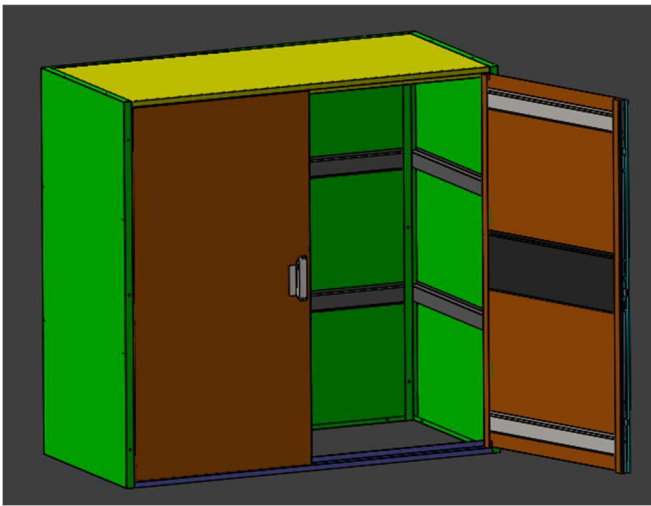
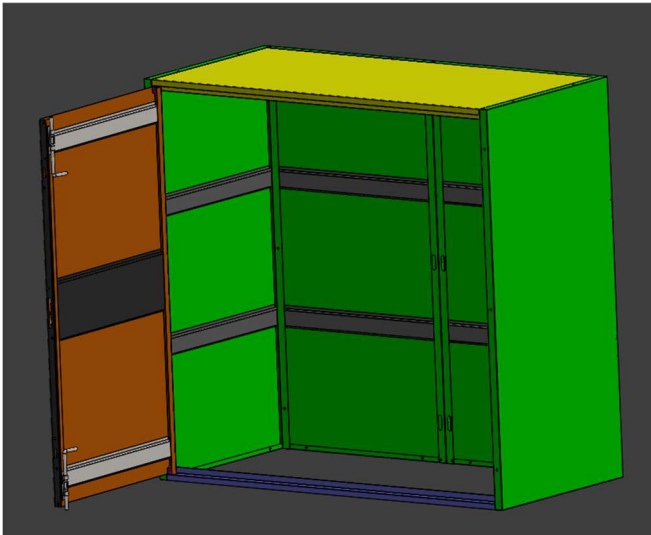


ETAPE 4 : Assemblage « traverse »

4 vis BHC M8x20



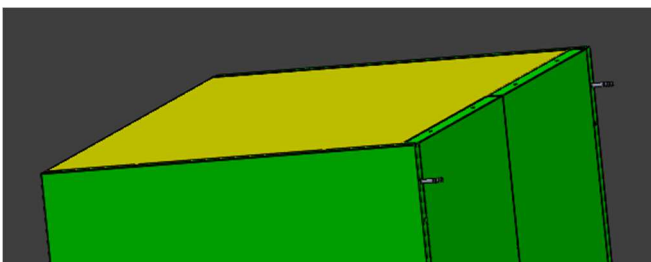
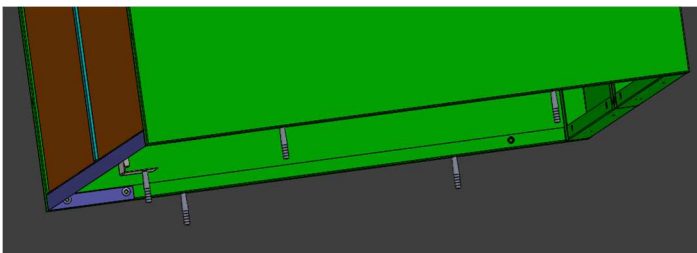
ETAPE 5 : Montage des vantaux



/!\ Ne pas oublier la
Rondelle laiton



ETAPE 6 : Fixation de l'abris



5 fixations au sol
2 fixations murales